

Learner's Name:		Date:		Learning Outcome:
-----------------	--	-------	--	-------------------

Using Layer Styles

This technique shows how to add layer styles to enhance the presentation of your images. This exercise builds on the previous Layers 1 where a basic triptych was created.

Resources

Triptych image from the Layers 1 exercise saved as a PSD file.

Post processing - Step by Step



Figure 1 Start Image

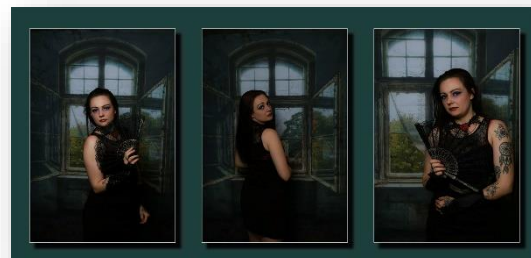
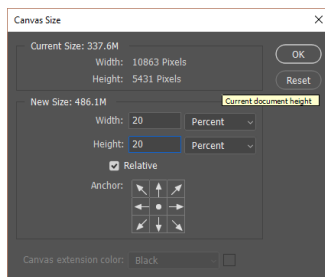


Figure 2 Finish Image

Open the image in Photoshop: File > Open locate the image and click OK

The layer stack should look like:

Click on the bottom layer and extend the canvas 20% vertically and 20% horizontally: Use Image > Canvas Size...



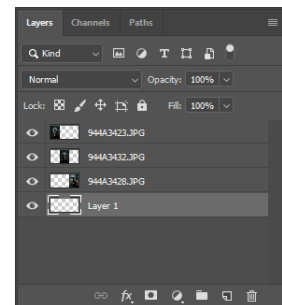
Complete the dialog box as shown on the left, then click OK

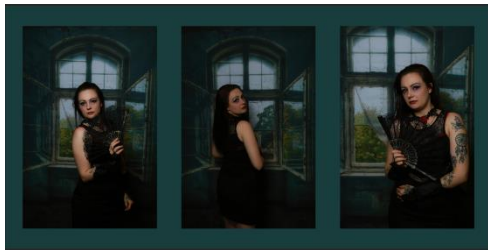
From the tool bar on the left of the screen, choose the Move tool

In the Options bar for the Move tool ensure that the Auto Select box is ticked. This will make it easier to move the layers without having to make the layer active each time. Spread the images to take advantage of the extra space. Next, select the top three layers and choose "Distribute horizontal centres" from the Options toolbar.


First, let's fill the background with a colour. Click on the foreground colour swatch. The Color Picker dialog appears and you can choose any colour you like. Sometimes it is better to pick a colour from the images as that will result in a more harmonious end product. Make sure the bottom layer is active. Select the Paint Bucket Tool from the toolbar and click anywhere on the image.

The current result is shown below so now we need to make the images pop from the page:

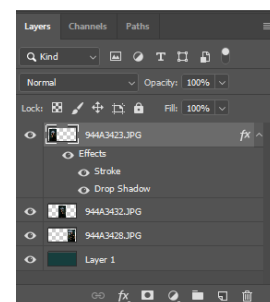
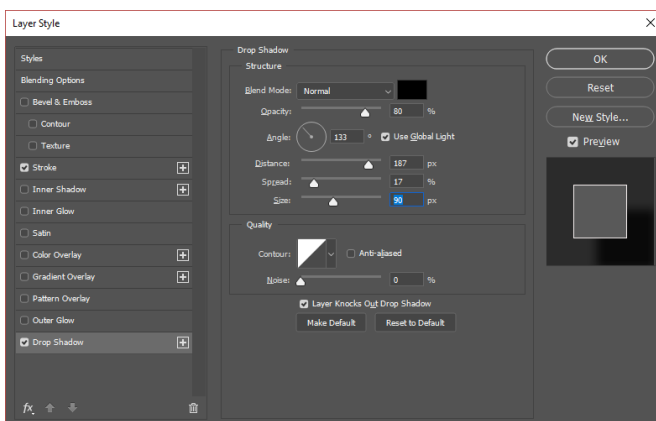
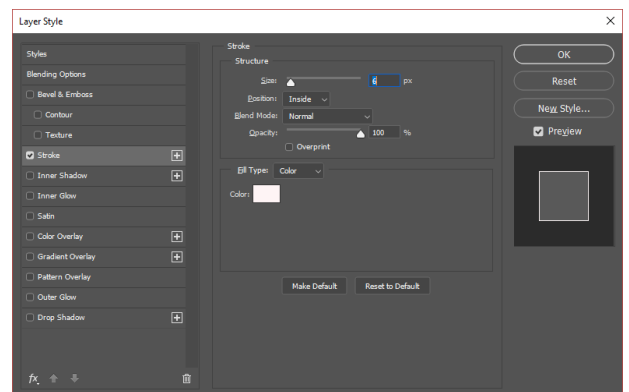




Click on the top layer. We will now apply some layer styles to put a border on each image and a drop shadow to lift it from the background. A layer style comprises one or more effects that surround or are applied to all the pixels on your layer. Effects that surround pixels include strokes (thin or thick outlines of colour), shadows, and glows (outlines of semi-transparent colour). Effects that are applied to pixels include overlays of colour, patterns, or even gradients. In addition, the Bevel and Emboss effects are included to give your layer a 3D look. For more power, you can combine different effects. To be clear on terminology: all the items shown on the layer styles menu are called layer effects or simply effects.

The layer styles menu can be opened by clicking on  at the bottom of the layers panel. Complete the dialog as shown on the right:

Next bring up the Drop Shadow options by putting a tick in the box and clicking on the text "Drop Shadow". Dial in the following settings below:



Click OK. You will notice that your layers panel now resembles:

We need to repeat this for the other two layers. A quick way of doing this is to hold the Alt key and drag the fx from the top layer to the next one. Let go of the Alt key. The effect has now been applied to that layer. Repeat for the next layer.

Save your image in both PSD and JPEG format.

The power of layers is that you can continue to make changes e.g. following feedback from a client. Try the following extension activities:

Replace the solid background with a gradient background	Change the colour of the shadow
Rearrange the layers so that they are not in a straight line	Apply different effects to the layers
Change the colour of the border stroke	